

› Call us today – 877 774 3370

## Engineered Edge Protection System (EEPS)

### Specialized Edge Protection & Falling Debris Systems

- › A revolutionary edge protection panel system engineered with longevity in mind
- › EEPS Rapid Post enables quick installation (up to 10x faster than traditional drill and fix systems), eliminates drilling and does not penetrate or damage the concrete
- › Significant cost savings compared to typical 2x4 lumber or ½ inch cable fall prevention alternatives
- › Meets and exceeds OSHA 1926.502 test requirements

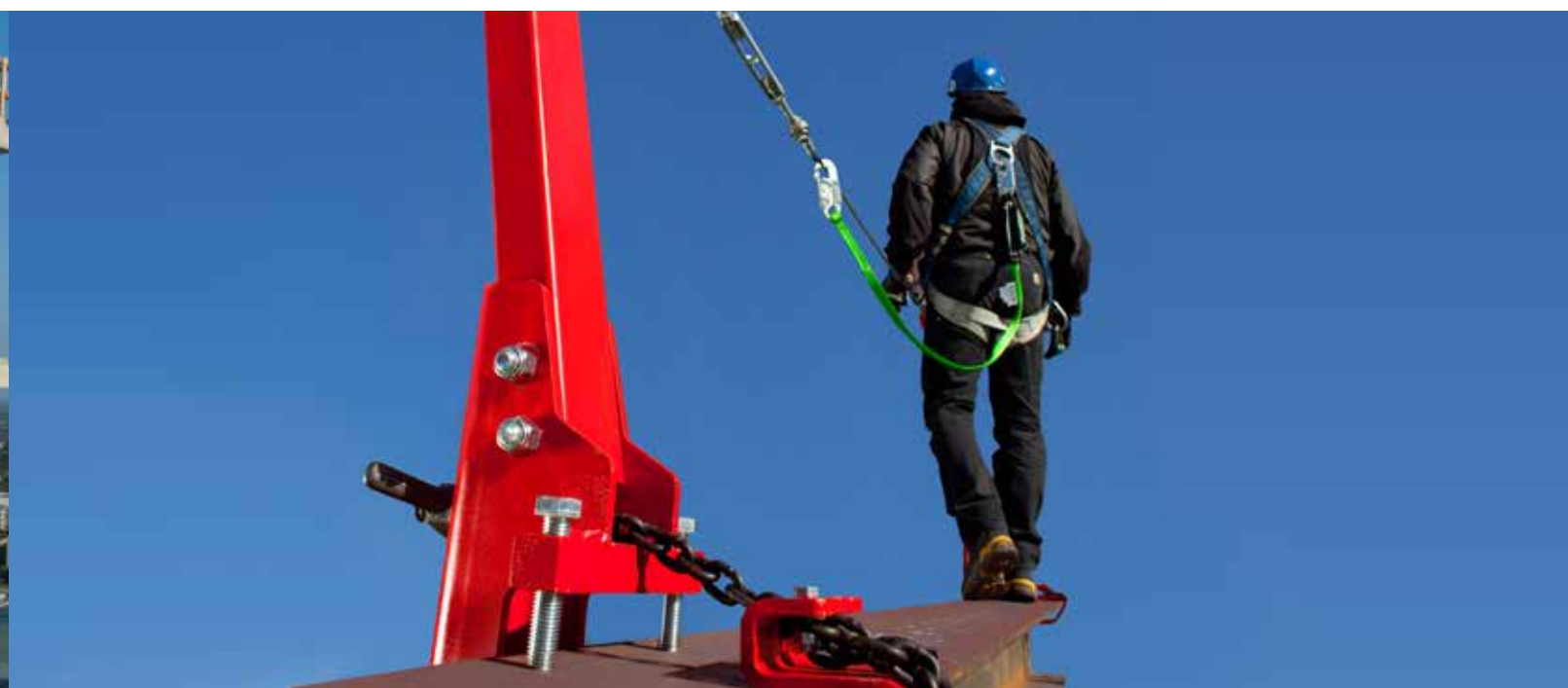


## SpiderLine™ Temporary Horizontal Lifeline

Easy to install fall protection solution for ironworkers and those navigating bridges, construction sites, roof tops and other elevated surfaces

- › Energy absorber shear pin prevents over-tensioning and improves tension indication, minimizing the frequency of part replacement.
- › Standard modular stanchion post makes it more affordable than competitors' systems.
- › Trip hazards are eliminated with the low profile chain and the 12.5° vertical angle that allows an open walkway.
- › Wide clamp option accommodates beams up to 36 in. (914 mm) wide with flanges up to 3 3/8 in. (86 mm) thick.
- › Meets CFR 29 OSHA 1926 Subpart M and CSA Z259.13-04 requirements

- Max length**
  - › 300 ft. (91.4 m)
- Span between stanchions**
  - › Max: 60 ft. (18.3 m)
  - › Min: 20 ft. (6.1 m)
- Max persons**
  - › Per span: 2
  - › Per installation: 6
- Wire rope**
  - › 5/16 in. (7.9 mm) 5x26 WS



Spider Sentry™

Spider Containet™

Spider WorkWeb™

AlumaSystems (EEPS)

SpiderLine™ (THLL)



## Engineered Edge Protection Systems Offered

### Rapid Panel

- › Sections come in Standard, Half, Extension, Debris Sock, Half Debris Sock

### Rapid Post

- › The Rapid Post simplicity allows for maximum speed during erection and dismantling up to 10 times faster than traditional systems.

### Staircase Solutions

- › The innovative stair rail system can provide fall protection to the most challenging of areas.

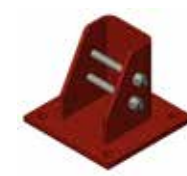
### Elevator Protection

- › Using standard Rapid components, in conjunction with an EEPS Elevator Gate, a secure enclosure can be built to protect valuables and control access.

### Debris Fan Solutions

- › Debris Netting available in two widths protects large ranges from 13-20 ft

### Various base options for optimal flexibility



Bolt Down



Weld Down Flange



Weld Down No Flange



Concrete Rebar Clamp

Pass-through feature eliminates the need to frequently unhook the lanyard



365 Upland Drive, Seattle, WA 98188  
1 877 774 3370 | www.spiderstaging.com

**BRAND SAFWAY™**

For more information, visit [www.brandsafway.com](http://www.brandsafway.com)

©2018 All rights reserved.

BSL 970

**BRAND SAFWAY™**

Whether it's a complete fall protection system, debris containment or a netting work access solution, BrandSafway is committed to leading the industry in safety, innovation and productivity.



**Spider Sentry™ Perimeter Netting**

**Flexible perimeter fall protection and debris containment for any size or configuration**

- › High-tensile, synthetic, diamond-mesh nets
- › Withstands normal wear and ultraviolet degradation
- › Complete line of strong yet lightweight hardware
- › Easily transported and installed
- › Compliant with OSHA 1926.105, 1926.501 and 1926.502, and ANSI/ASSE A10.11-2010 (R2016) and A10.37-2016



**Spider ContainNet™ Debris Containment System**

**Custom designed and fabricated to your exact requirements to contain debris and increase safety**

- › Dual-layer construction with structural netting for heavy loads and a mesh liner for fine particles
- › Three tested strength ratings for optimal performance: 2,000; 5,000 or 10,000 lb capacity
- › Compliant with OSHA 1926.502 and ANSI/ASSE A10.37-2016 fall prevention requirements

**Spider WorkWeb™ Work Access Netting**

**Unique and versatile work access solution, especially where lifts and scaffolds are difficult to deploy**

- › Engineered net and interwoven tension strap design, installed between existing structural members
- › High-tenacity, polypropylene netting walking surface is predictable, easily navigable and won't become slippery
- › Knotless construction isolates potential surface issues, keeping workers safe and secure
- › Saves time and money by eliminating constant repositioning of support systems

Per OSHA 1910 Subpart D Walking and Working Surfaces and OSHA 1926 Subpart M, a perimeter guardrail system may be required. In the absence of a guardrail system, additional fall protection will be required when using Spider's access netting.



**Spider Sentry™ Components**

**Personnel Safety Net PSNL**

- › Style: Knotted nylon twine, bonded
- › Cord diameter: #120 (5 mm)
- › Mesh size: 3½ in. (90 mm) bar, 7 in. (180 mm) stretched
- › Mesh break: 1145 lbf (5.1 kN)
- › Weight: 11 oz / sq yd
- › Drop test: 17,500 ft-lb (23,730 N-m), ANSI A10.11



**Debris Liner**

- Standard**
  - › ½ in. Knitted Polyethylene
  - › 70% Opacity
- Optional**
  - › ½ in. Knitted Polyethylene
  - › 85% Opacity
- Optional**
  - › ¾ in. Knitted Polyester

**Installation**

Whether suspending nets to protect open areas or mounting nets on perimeter poles that can be relocated to different levels on the structure as your project progresses, Spider will work with you to determine the best installation method for your jobsite.

Multiple hardware mounting options ensure your Spider Sentry Perimeter Netting will work on virtually any structure:

- › Standard mounting bracket assembly
- › Slab bracket assembly
- › Column mount

**Spider ContainNet™ Customization – Easy as 1, 2, 3:**

**1 Choose the strength rating.**

- 2,000 lb capacity**
  - › 1250 High Tenacity Polypropylene knotless 2 in. netting
- 5,000 lb capacity**
  - › 820 High Tenacity Polypropylene knotless 2½ in. netting
- 10,000 lb capacity**
  - › 820 High Tenacity Polypropylene knotless 2½ in. netting with additional border reinforcements for increased strength

**2 Choose the liner.**

- › ¾ in. mesh for heavy loads
- › ½ in. mesh for fine particles

**3 Choose the color.**

- Black
- Gray
- Sand



**Spider WorkWeb™ Components**

**High Tenacity Polypropylene Knotless Netting**

- › In 1½ in. mesh, the blue HTPP knotless netting is highly visible, providing confidence when navigating the systems.

**Tension Strap**

- › Strong, durable tension straps create an interwoven grid between structural members to support the work access netting panels.

**Installation and Maintenance**

- › Spider work access systems are installed, inspected and maintained by professionally trained and certified crews across North America. With daily inspection and re-tensioning, your workers will experience the highest level of performance and safety to keep the job running smoothly.